



The new degree of comfort.®



Commercial Gas
Triton Water Heaters

TRITON® – The Most Intelligent, High-Efficiency Commercial Gas Water Heater in the Market

Ideal for Replacements and New Construction Applications

THE TRITON ADVANTAGE

- Most accurate, all-inclusive leak detection and prevention system in the market
- Eliminate downtime with the ability to detect and prevent water heater problems
- Triple pass heat exchanger constructed of porcelain coated ASME grade steel
- Universal retrofit features make it easy to replace any water heater

SS EXCLUSIVE FEATURES

- **LeakGuard™** – All inclusive leak detection and prevention system with auto shut off valve limits water leakage outside the tank
- **Integrated BMS Connectivity Via BACnet (MS/TP)** – Built-in BACnet port easily connects to building management systems (BMS)
- **Energy & Water Usage Reports** – Track usage trends and manage energy and water consumption through the Rheem EcoNet app
- **Warranty** – 5-Year limited tank*

SS AND SU FEATURES

Built-In Intelligence

- **LeakSense™** – Intelligent leak detection system detect leaks as small as a grain of sand and provides real-time notifications that warn you before it becomes an emergency
- **EcoNet® Smart Monitoring Technology with Integrated WiFi**** – Rheem Exclusive! Provides performance updates and alerts via both mobile device and full-color LCD display
- **Systematic Health Checks** – Ongoing self-monitoring of Triton's most vital components and alerts of potential issues
- **Preventive Maintenance Alerts** – Maintenance reminders help to extend life of the tank

Easy Retrofit/Installation

- **Multiple Connection Points** – Multiple water connections at the top, side and bottom of the unit simplify installation for replacement of any model
- **Variety of Flexible Venting Options Including InnoFlue® Flex Venting** – Polypropylene, PVC, CPVC, InnoFlue® Flex Vent and ABS materials; venting 2, 3, 4 and 6 inch diameters
- **Built-In Condensate Neutralizer** – Reduces water acidity for safe drainage

Built to Last

- **Triple Pass Heat Exchanger** – Constructed with premium porcelain coated **ASME-grade steel** to minimize rust and corrosion for extended tank life and maximum thermal efficiency
- **Advanced Power Anodes** – Self-adjusting, non-sacrificial power anodes provide systematic monitoring of anode health and remaining tank life

Energy Efficient

- **Full Modulation** – Maximizes energy savings by optimizing BTU input for specific water heating demand
- **Scheduling Capability** – Adjust to heat water only during peak operating hours when your business needs it most

Plus

- Altitude certified up to 8,999 feet above sea level
- 3/4-Inch gas connection
- CSA/ASME rated T&P valve
- Meets 14 ng/J NOx requirements
- SCAQMD Rule 1146.2 compliant
- ENERGY STAR® rated
- NSF Rated
- Meets Massachusetts specifications
- Maximum temperature setting 185°F
- **Warranty** – SU Model: 3-Year limited tank; SS Model: 5-Year limited tank*

*See Commercial Warranty Certificate for complete information.

**2.4 GHz WIFI broadband Internet connection required.



Triton SU

Triton SS

Rheem Triton

80 and 100-Gallon Capacities
130,000-399,900 BTU/h
Sealed Combustion System
Up to 98% Thermal Efficiency
Ultra Low NOx
Porcelain Coated Tank Lining
and Heat Exchanger
Natural and LP Gas



With
Optional Kit



INTEGRATED AIR & WATER

Triton Gas Water Heaters

| BASE MODELS: SU = SMART UNIVERSAL | |
|-----------------------------------|-----------------|
| 80-GALLON | 100-GALLON |
| GHE80SU-130(A) | GHE100SU-130(A) |
| GHE80SU-160(A) | GHE100SU-160(A) |
| GHE80SU-200(A) | GHE100SU-200(A) |
| GHE80SU-300(A) | GHE100SU-250(A) |
| | GHE100SU-300(A) |
| | GHE100SU-400(A) |

| PREMIUM MODELS: SS = SMART AUTO SHUTOFF VALVE | |
|---|-----------------|
| 80-GALLON | 100-GALLON |
| GHE80SS-130(A) | GHE100SS-130(A) |
| GHE80SS-160(A) | GHE100SS-160(A) |
| GHE80SS-200(A) | GHE100SS-200(A) |
| GHE80SS-300(A) | GHE100SS-250(A) |
| | GHE100SS-300(A) |
| | GHE100SS-400(A) |

A= ASME Option

Electrical Requirements: 110 Volt, 50 / 60 Hertz, 7.5 Max Breaker Amp Draw

| RECOVERY CAPACITIES (Recovery in U.S. Gallons/Hr. (GPH) and Liters/Hr. (LPH) at various temperature rises) | | | | | | | | | | | | | | | |
|--|-------------------------|----------------|----------------------|-------|-------------|-------------|-------------|-------------|-------------|-------------|--------------|--------------|--------------|--------------|--------------|
| MODEL NUMBER | INPUT (BTU/H) NAT. & LP | ASME CERTIFIED | | UNITS | 40°F (22°C) | 50°F (28°C) | 60°F (33°C) | 70°F (39°C) | 80°F (45°C) | 90°F (50°C) | 100°F (56°C) | 110°F (61°C) | 120°F (67°C) | 130°F (75°C) | 140°F (78°C) |
| | | THERMAL EFF. | STANDBY LOSS (BTU/H) | | | | | | | | | | | | |
| GHE80SU/SS-130(A) | 130,000 | 98% | 950.0 | GPH | 382 | 306 | 255 | 218 | 191 | 170 | 153 | 139 | 127 | 118 | 109 |
| | | | | LPH | 1448 | 1160 | 966 | 826 | 724 | 644 | 580 | 527 | 481 | 447 | 413 |
| GHE80SU/SS-160(A) | 160,000 | 97% | 980.0 | GPH | 465 | 372 | 310 | 266 | 233 | 207 | 186 | 169 | 155 | 143 | 133 |
| | | | | LPH | 1760 | 3305 | 1173 | 1007 | 882 | 784 | 704 | 640 | 587 | 541 | 503 |
| GHE80SU/SS-200(A) | 199,900 | 95% | 1001.0 | GPH | 576 | 461 | 384 | 329 | 288 | 256 | 230 | 209 | 192 | 177 | 165 |
| | | | | LPH | 2180 | 1745 | 1454 | 1245 | 1090 | 696 | 871 | 791 | 727 | 670 | 625 |
| GHE80SU/SS-300(A) | 300,000 | 95% | 1105.0 | GPH | 855 | 684 | 570 | 488 | 427 | 380 | 342 | 311 | 285 | 263 | 244 |
| | | | | LPH | 3237 | 2589 | 2158 | 1847 | 1616 | 1438 | 1295 | 1177 | 1079 | 996 | 924 |
| GHE100SU/SS-130(A) | 130,000 | 97% | 1050.0 | GPH | 382 | 306 | 255 | 218 | 191 | 170 | 153 | 139 | 127 | 118 | 109 |
| | | | | LPH | 1446 | 1158 | 965 | 825 | 723 | 634 | 579 | 526 | 481 | 447 | 413 |
| GHE100SU/SS-160(A) | 160,000 | 97% | 1080.0 | GPH | 470 | 376 | 314 | 269 | 235 | 209 | 188 | 171 | 157 | 145 | 134 |
| | | | | LPH | 1779 | 1423 | 1189 | 1018 | 890 | 791 | 712 | 647 | 594 | 549 | 507 |
| GHE100SU/SS-200(A) | 199,900 | 97% | 1100.0 | GPH | 582 | 465 | 388 | 332 | 291 | 259 | 233 | 212 | 194 | 179 | 166 |
| | | | | LPH | 2203 | 1760 | 1469 | 1257 | 1102 | 980 | 882 | 803 | 746 | 678 | 628 |
| GHE100SU/SS-250(A) | 250,000 | 96% | 1155.0 | GPH | 727 | 582 | 485 | 416 | 364 | 323 | 291 | 264 | 242 | 224 | 208 |
| | | | | LPH | 2752 | 2203 | 1836 | 1575 | 1378 | 1223 | 1102 | 999 | 916 | 848 | 787 |
| GHE100SU/SS-300(A) | 300,000 | 96% | 1210.0 | GPH | 873 | 698 | 582 | 499 | 436 | 388 | 349 | 317 | 291 | 269 | 249 |
| | | | | LPH | 3305 | 2642 | 2203 | 1889 | 1650 | 1469 | 1321 | 1200 | 1102 | 1018 | 943 |
| GHE100SU/SS-400(A) | 399,900 | 95% | 1310.0 | GPH | 1139 | 912 | 760 | 651 | 570 | 506 | 456 | 414 | 380 | 351 | 326 |
| | | | | LPH | 4312 | 3452 | 2877 | 2464 | 2158 | 1915 | 1726 | 1567 | 1438 | 1329 | 1234 |

| MAXIMUM DELIVERY (In U.S. Gallons and Liters - Includes useable storage and recover for indicated times) | | | | | | | | | | | | | | | |
|--|-------------------------|------|--------|------------|-------|--------|---------|---------|---------|---------|---------|---------|----------|----------|-------------------------|
| MODEL NUMBER | INPUT (BTU/H) NAT. & LP | GAL. | LITERS | TEMP. RISE | UNITS | 5 MIN. | 10 MIN. | 15 MIN. | 20 MIN. | 30 MIN. | 45 MIN. | 60 MIN. | 120 MIN. | 180 MIN. | MIN TO RECOVER CONTENTS |
| GHE80SU/SS-130(A) | 130,000 | 80 | 303 | 100°F | GPH | 69 | 81 | 94 | 107 | 132 | 171 | 209 | 362 | 515 | 31 |
| | | | | 56°C | LPH | 260 | 308 | 357 | 405 | 501 | 646 | 791 | 1369 | 1948 | |
| GHE80SU/SS-160(A) | 160,000 | 80 | 303 | 100°F | GPH | 72 | 87 | 103 | 118 | 149 | 196 | 242 | 428 | 615 | 28 |
| | | | | 56°C | LPH | 271 | 329 | 388 | 447 | 564 | 741 | 917 | 1622 | 2326 | |
| GHE80SU/SS-200(A) | 199,900 | 80 | 303 | 100°F | GPH | 75 | 94 | 114 | 133 | 171 | 229 | 286 | 517 | 747 | 21 |
| | | | | 56°C | LPH | 285 | 357 | 430 | 503 | 648 | 866 | 1084 | 1956 | 2827 | |
| GHE80SU/SS-300(A) | 300,000 | 80 | 303 | 100°F | GPH | 84 | 113 | 141 | 170 | 227 | 312 | 398 | 740 | 1081 | 14 |
| | | | | 56°C | LPH | 320 | 428 | 535 | 643 | 859 | 1182 | 1506 | 2800 | 4094 | |
| GHE100SU/SS-130(A) | 130,000 | 100 | 379 | 100°F | GPH | 83 | 95 | 108 | 121 | 146 | 185 | 223 | 376 | 529 | 39 |
| | | | | 56°C | LPH | 313 | 361 | 410 | 458 | 554 | 699 | 844 | 1422 | 2001 | |
| GHE100SU/SS-160(A) | 160,000 | 100 | 379 | 100°F | GPH | 86 | 101 | 117 | 133 | 164 | 211 | 258 | 446 | 634 | 33 |
| | | | | 56°C | LPH | 324 | 384 | 443 | 502 | 621 | 799 | 977 | 1689 | 2401 | |
| GHE100SU/SS-200(A) | 199,900 | 100 | 379 | 100°F | GPH | 89 | 109 | 128 | 148 | 186 | 245 | 303 | 535 | 768 | 26 |
| | | | | 56°C | LPH | 338 | 412 | 485 | 559 | 705 | 926 | 1146 | 2027 | 2908 | |
| GHE100SU/SS-250(A) | 250,000 | 100 | 379 | 100°F | GPH | 94 | 118 | 143 | 167 | 215 | 288 | 361 | 652 | 943 | 21 |
| | | | | 56°C | LPH | 357 | 449 | 540 | 632 | 816 | 1091 | 1366 | 2467 | 3569 | |
| GHE100SU/SS-300(A) | 300,000 | 100 | 379 | 100°F | GPH | 99 | 128 | 157 | 186 | 245 | 332 | 419 | 768 | 1117 | 18 |
| | | | | 56°C | LPH | 375 | 485 | 595 | 705 | 926 | 1256 | 1586 | 2908 | 4229 | |
| GHE100SU/SS-400(A) | 399,900 | 100 | 379 | 100°F | GPH | 108 | 146 | 184 | 222 | 298 | 412 | 526 | 982 | 1437 | 13 |
| | | | | 56°C | LPH | 409 | 553 | 696 | 840 | 1128 | 1559 | 1990 | 3715 | 5441 | |

VENTING OPTIONS

POWER DIRECT VENT

| MODEL NUMBER | MAX. VENT LENGTH (Eq. Ft.) | | | | | | | |
|--------------------|----------------------------|--------|-----------|--------|------------|--------|------------|--------|
| | PIPE DIAMETER | | | | | | | |
| | 2" (5 cm) | | 3" (8 cm) | | 4" (10 cm) | | 6" (15 cm) | |
| | INLET | OUTLET | INLET | OUTLET | INLET | OUTLET | INLET | OUTLET |
| GHE80SU/SS-130(A) | 20 | 35 | 60 | 75 | 120 | 135 | X | X |
| GHE80SU/SS-160(A) | 20 | 35 | 60 | 75 | 120 | 135 | X | X |
| GHE80SU/SS-200(A) | X | X | 60 | 75 | 120 | 135 | X | X |
| GHE80SU/SS-300(A) | X | X | 60 | 75 | 120 | 135 | 120 | 135 |
| GHE100SU/SS-130(A) | 20 | 35 | 60 | 75 | 120 | 135 | X | X |
| GHE100SU/SS-160(A) | 20 | 35 | 60 | 75 | 120 | 135 | X | X |
| GHE100SU/SS-200(A) | X | X | 60 | 75 | 120 | 135 | X | X |
| GHE100SU/SS-250(A) | X | X | 60 | 75 | 120 | 135 | X | X |
| GHE100SU/SS-300(A) | X | X | 60 | 75 | 120 | 135 | 120 | 135 |
| GHE100SU/SS-400(A) | X | X | 50 | 65 | 70 | 85 | 120 | 135 |

POWER VENT

| MODEL NUMBER | MAX. VENT LENGTH (Eq. Ft.) | | | | | | | |
|--------------------|----------------------------|--------|-----------|--------|------------|--------|------------|--------|
| | PIPE DIAMETER | | | | | | | |
| | 2" (5 cm) | | 3" (8 cm) | | 4" (10 cm) | | 6" (15 cm) | |
| | INLET | OUTLET | INLET | OUTLET | INLET | OUTLET | INLET | OUTLET |
| GHE80SU/SS-130(A) | - | 35 | - | 135 | - | 185 | - | X |
| GHE80SU/SS-160(A) | - | 35 | - | 135 | - | 185 | - | X |
| GHE80SU/SS-200(A) | - | X | - | 135 | - | 185 | - | X |
| GHE80SU/SS-300(A) | - | X | - | 135 | - | 145 | - | 120 |
| GHE100SU/SS-130(A) | - | 35 | - | 135 | - | 185 | - | X |
| GHE100SU/SS-160(A) | - | 35 | - | 135 | - | 185 | - | X |
| GHE100SU/SS-200(A) | - | X | - | 135 | - | 185 | - | X |
| GHE100SU/SS-250(A) | - | X | - | 135 | - | 185 | - | 120 |
| GHE100SU/SS-300(A) | - | X | - | 135 | - | 185 | - | 120 |
| GHE100SU/SS-400(A) | - | X | - | 65 | - | 100 | - | 135 |

For each long radius sweep 90° elbow, reduce pipe length by five (5) feet.

For each standard sweep 90° elbow, reduce pipe by eight (8) feet.

For each 45° elbow, reduce pipe length by two and a half (2.5) feet.

Note: Vent pipe size should not be mixed for venting these units.

Use same diameter pipe for all venting of the unit.

3" Concentric = 60 ft. in, 75 ft. out

4" Concentric = 120 ft. in, 135 ft. out

See use and care manual for venting details.

Venting configurations are the same for SS Models. Vents with Polypropylene, ABS, CPVC or PVC.

NOTE: For Canadian installations, please use Polypropylene, ULC S636 PVC or CPVC.

Efficiency | All models tested according to ANSI test procedures, and meet or exceed the thermal efficiency and standby loss requirements of ASHRAE standard (EPact). Also exceeds energy efficiency codes of all states including California Energy Commission (CEC).

Safety and Construction | Design certified by CSA: For operation at 185 degrees; meets all safety and construction requirement of ANSI Z21.10.3; as an automatic storage or instantaneous water heater; as an automatic circulating tank water heater; and for operation on combustible floors and in alcove installations. **Certified for 150 PSI maximum working pressure (160 PSI for ASME models).**

Optional Construction | ASME construction is available on designated models. UL Sanitation (NSF5) compliant models are available when equipped with optional seal kit (Part No. AS42690).



The new degree of comfort.



Commercial Gas
Triton Water Heaters

DIMENSIONAL INFORMATIONS (Shown in English and Metric)

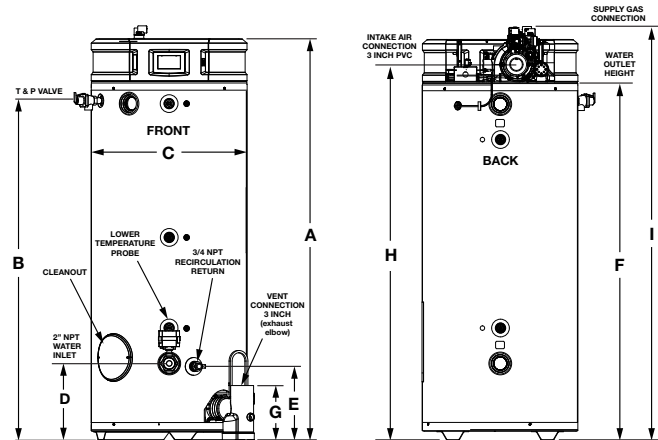
| MODEL NUMBER | UNITS | A | B | C | D | E | F | G | H | I | VENT | SIDE WATER CONNECTION | | TOP OUTLET | APPROX. SHIP. WT. (LB)* |
|--------------------|--------|--------|--------|--------|-----|--------|--------|--------|--------|---------|------------|-----------------------|--------|------------|-------------------------|
| | | | | | | | | | | | | INLET | OUTLET | | |
| GHE80SU/SS-130(A) | Inches | 67-7/8 | 57.43 | 26-3/8 | 13 | 12-1/2 | 60-1/2 | 10-5/8 | 63-5/8 | 70-1/16 | 2", 3", 4" | 2" NPT | 2" NPT | 1.5" NPT | 600 |
| | MM | 1724 | 1459 | 668 | 331 | 318 | 1537 | 270 | 1617 | 1780 | | | | | |
| GHE80SU/SS-160(A) | Inches | 67-7/8 | 57.43 | 26-3/8 | 13 | 12-1/2 | 60-1/2 | 10-5/8 | 63-5/8 | 70-1/16 | 2", 3", 4" | 2" NPT | 2" NPT | 1.5" NPT | 600 |
| | MM | 1724 | 1459 | 668 | 331 | 318 | 1537 | 270 | 1617 | 1780 | | | | | |
| GHE80SU/SS-200(A) | Inches | 67-7/8 | 57.43 | 26-3/8 | 13 | 12-1/2 | 60-1/2 | 10-5/8 | 63-5/8 | 70-1/16 | 2", 3", 4" | 2" NPT | 2" NPT | 1.5" NPT | 650 |
| | MM | 1724 | 1459 | 668 | 331 | 318 | 1537 | 270 | 1617 | 1780 | | | | | |
| GHE80SU/SS-300(A) | Inches | 67-7/8 | 57.43 | 26-3/8 | 13 | 12-1/2 | 60-1/2 | 10-5/8 | 63-5/8 | 70-1/16 | 3", 4", 6" | 2" NPT | 2" NPT | 1.5" NPT | 650 |
| | MM | 1724 | 1459 | 668 | 331 | 318 | 1537 | 270 | 1617 | 1780 | | | | | |
| GHE100SU/SS-130(A) | Inches | 77 | 66-3/4 | 26-3/8 | 13 | 12-1/2 | 69.80 | 10-5/8 | 72-3/4 | 77-1/2 | 2", 3", 4" | 2" NPT | 2" NPT | 1.5" NPT | 725 |
| | MM | 1956 | 1696 | 668 | 331 | 318 | 1773 | 270 | 1847 | 1969 | | | | | |
| GHE100SU/SS-160(A) | Inches | 77 | 66-3/4 | 26-3/8 | 13 | 12-1/2 | 69.80 | 10-5/8 | 72-3/4 | 77-1/2 | 2", 3", 4" | 2" NPT | 2" NPT | 1.5" NPT | 725 |
| | MM | 1956 | 1696 | 668 | 331 | 318 | 1773 | 270 | 1847 | 1969 | | | | | |
| GHE100SU/SS-200(A) | Inches | 77 | 66-3/4 | 26-3/8 | 13 | 12-1/2 | 69.80 | 10-5/8 | 72-3/4 | 77-1/2 | 2", 3", 4" | 2" NPT | 2" NPT | 1.5" NPT | 775 |
| | MM | 1956 | 1696 | 668 | 331 | 318 | 1773 | 270 | 1847 | 1969 | | | | | |
| GHE100SU/SS-250(A) | Inches | 77 | 66-3/4 | 26-3/8 | 13 | 12-1/2 | 69.80 | 10-5/8 | 72-3/4 | 77-1/2 | 3", 4", 6" | 2" NPT | 2" NPT | 1.5" NPT | 775 |
| | MM | 1956 | 1696 | 668 | 331 | 318 | 1773 | 270 | 1847 | 1969 | | | | | |
| GHE100SU/SS-300(A) | Inches | 77 | 66-3/4 | 26-3/8 | 13 | 12-1/2 | 69.80 | 10-5/8 | 72-3/4 | 77-1/2 | 3", 4", 6" | 2" NPT | 2" NPT | 1.5" NPT | 775 |
| | MM | 1956 | 1696 | 668 | 331 | 318 | 1773 | 270 | 1847 | 1969 | | | | | |
| GHE100SU/SS-400(A) | Inches | 77 | 66-3/4 | 26-3/8 | 13 | 12-1/2 | 69.80 | 10-5/8 | 72-3/4 | 77-1/2 | 3", 4", 6" | 2" NPT | 2" NPT | 1.5" NPT | 775 |
| | MM | 1956 | 1696 | 668 | 331 | 318 | 1773 | 270 | 1847 | 1969 | | | | | |

*Weights listed are for non-ASME. Add 35 lbs. for ASME models.

0" CLEARANCE TO ALL COMBUSTIBLE SURFACES ON SIDES AND BACK; 6" FOR TOP.
(FOR CANADIAN INSTALLATIONS, PLEASE USE POLYPROPYLENE, ULC S636 PVC OR CPVC.)

| FLEX VENT LENGTHS POWER VENT ONLY AP19353 - 50' OF 3" PP FLEX PIPE AP19354 - 25' OF 3" PP FLEX PIPE | |
|--|------------------|
| MODEL NUMBER | PIPE DIAMETER 3" |
| GHE80SU/SS-130(A) | 60 |
| GHE80SU/SS-160(A) | 60 |
| GHE80SU/SS-200(A) | 60 |
| GHE80SU/SS-300(A) | 60 |
| GHE100SU/SS-130(A) | 60 |
| GHE100SU/SS-160(A) | 60 |
| GHE100SU/SS-200(A) | 60 |
| GHE100SU/SS-250(A) | 60 |
| GHE100SU/SS-300(A) | 60 |
| GHE100SU/SS-400(A) | 60 |

NOTE: Equivalent 60 Ft. with rigid & flexible pipe.



Recommended Specifications (for trade reference only)

Water heater(s) shall be Triton Model _____ # or equal, manufactured by Rheem, having a gas input of _____ BTU/h and recovery rate of _____ GPH at a 100°F temperature rise and tested and certified at a Min. of 95% thermal efficiency, with a maximum hydrostatic working pressure of 150 psi and minimum Inlet Gas Pressure 3.5" in WC. Water heater(s) shall 1.) Include a modulating gas burner that automatically adjusts the input based on demand. 2.) Have Power anodes that are non-sacrificial and maintenance free. 3.) Have a factory installed CSA/ASME rated temperature and pressure relief valve, meet SCAQMD rule 1146.2 and include the CSA seal of certification 4.) Have a wet-base design and furnished with a heat exchange system with both sides coated in high temperature porcelain enamel. 5.) Have 2" NPT front and rear, (1) 1-1/2" NPT Top water connection. 6.) Have a 3 year (SU) or 5-year (SS) standard warranty.

The control shall be an integrated 4.3" Color touch screen with the ability to 1.) Provide user advanced notice of any issues with health alerts on tank and combustion system. 2.) Give users advanced notice of catastrophic failure with Integrated LeakSense™ leak detection. 3.) Automatically turn off water in the event of a failure with Integrated LeakGuard™ Auto Shut-Off Valve (SS model only). 4.) Report water & energy usage reports via app or control. (SS model only) 5.) Connect to a cloud, and control & remote monitor the system via the EcoNet® app through integrated WiFi. 6.) Connect to a Building Management System without the need of any accessories using an integrated BacNet MS/TP connection. (SS model only).

For Standard power vent, water heater shall be suited 2", 3", 4" or 6" _____ pipe for a total maximum venting of 185 ft. For Power Direct Vent water heater shall be suited for 2", 3", 4" or 6" _____ pipe for a total maximum vent length, intake 120 ft, exhaust 135 ft. Water heater(s) shall be able to vent with the following materials: Polypropylene, PVC, CPVC, ABS, & InnoFlue® flex venting.

In keeping with its policy of continuous progress and product improvement, Rheem reserves the right to make changes without notice.

Rheem Water Heating • 1115 Northmeadow Parkway, Suite 100
Roswell, Georgia 30076 • www.rheem.com

Rheem Canada Ltd./Ltée • 125 Edgeware Road, Unit 1
Brampton, Ontario L6Y 0P5 • www.rheem.com



INTEGRATED AIR & WATER